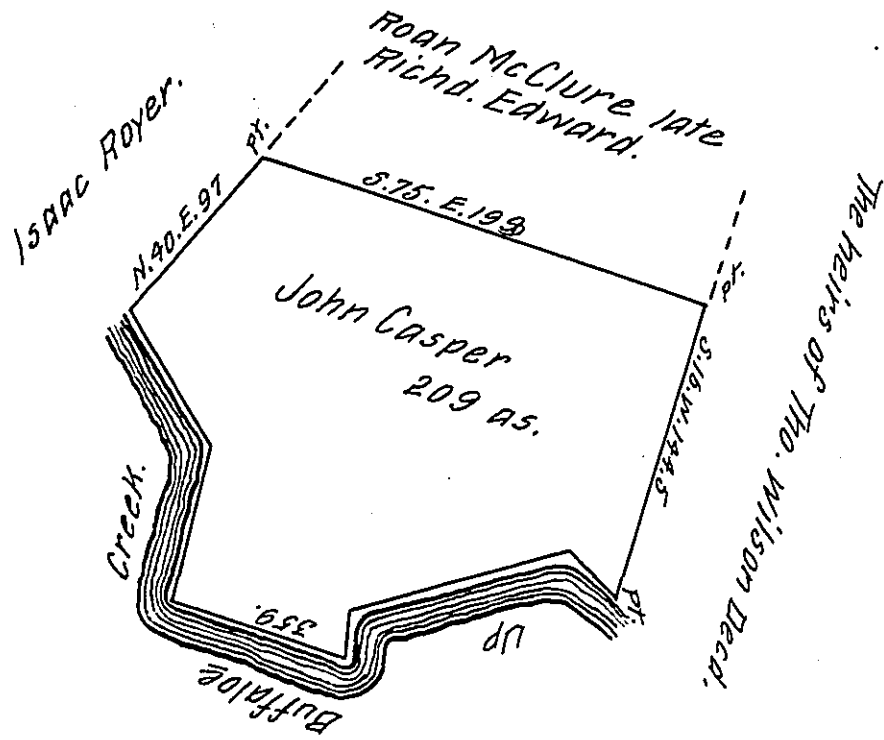


Cor & Dist UP
 Buffalo Creek.
 N. 49. W. 25
 S. 76. W. 100.
 S. 6. W. 20.
 N. 71. W. 83.
 N. 16. E. 63.
 N. 32. W. 66.
357



Situate in Kelly township Union [late Berks] County. Surveyed the 6th day of May 1832 by virtue of an Order granted to John Casper dated the 3d. day of April, 1769. No. 1300 Containing two hundred & Nine Acres with the Usual Allowance of Six pr. Cent &c.

The above described tract of land was Surveyed the 12th. day of August 1769. for Richard Edwards in pursuance of his order dated the 3d. day of April, 1769. No. 714.

Now Owned and possessed by Roan McClure in right of the said Richard Edwards.

pr. Uno. Hayes Con.

To Jacob Spangler Esq.

Surveyor General.

IN TESTIMONY that the above is a copy of the original remaining on file in the Department of Internal Affairs of Pennsylvania, made conformably to an Act of Assembly approved the 16th day of February, 1833, I have hereunto set my Hand and caused the Seal of said Department to be affixed at Harrisburg, this tenth _____ day of November _____ 1908.

Henry Howe
 Secretary of Internal Affairs.